

The online magazine for landscape photographers

**on** landscape

# 2018 Conference Exhibition







## Errochty #7

Pipeline leavingErrochty dam

*Adam Fowler*





### Temple of Sinawava

This is a well known bend on the Virgin River in Zion Park, Utah. It's from a dawn shoot a few years ago and taken on Velvia 100F using a venerable Rolleicord Vb - I think made around 1975 - which I inherited from my father. The light was particularly beautiful that morning, with the warm sunlight on the rock face contrasting with the cold blue of the sky and water. I was especially drawn to the ethereal soft light in the shrubs and trees in the background.

*Adam Pierzchala*





### Ice Trap

I noticed this ice detail whilst waiting for some cloud cover to help with capturing the rapids along Glen Etive. Alas, the bright conditions did not abate, so turning my attention to the ice and by using my jacket to create some shade, I came away with this image as an alternative to my original idea. I'm happy that the weather did not play ball on this occasion as I would probably have missed this opportunity.

*Adrian Tilbrook*





## Port Kilchoan, Ardnamurchan, Scotland

A long exposure shot looking across to Rum and Eigg from Ardnamurchan. Taken on a slightly rainy and windy evening as the sun headed for the horizon somewhere behind the clouds.

*Alastair Ross*





## Low Tide Saltwick Bay

On the final afternoon of my January week in Whitby I ventured to Saltwick Bay and was met by flat grey clouds and a very high supposedly low tide (2m). I turned away intending to find some tea and cake but then I decided to give the bay a try. I had wellies so what could go wrong?

It turned out to be a fabulous hour witnessing the clouds break and the pastel shades of the sky reflecting on the infinity pool that was Saltwick shelf. I also noticed that the waves were breaking in a perfect semicircle across the edge of the shelf.

This photo sums up the afternoon for me; a perfect wave with beautiful pastel shades.

*Alison Taylor*





## Evening light on the Upper Chindwin river, Myanmar

This shot brings back memories of balmy, sudden, tropical evenings on board a small cruiser on the Upper Chindwin river this February. This is typical of the sights we saw, small temporary fishing communities, jungle and mountains and the inevitable Buddhist stupa. The boat was obviously moving and so there were never opportunities to go back and try for a better shot so you had to just keep your eyes peeled constantly. It was very good discipline for a photographer.

*Allan Harris*





### Glamaig in the Mist, Sligachan, Isle of Skye

I had camped at Sligachan but had an uncomfortable night so was quite keen to rise early and I was rewarded by a fabulously atmospheric morning. I used an old manual focus Nikon 20mm on my D800 to include an interesting foreground as well as the misty mountains in the background.

*Andrew Herbert*







## Out Of Chaos

Murk Mire Moor is well named, being one of the bleakest areas on the North Yorkshire Moors. In very grey, early winter this is particularly true.

In the absence of colour or form in the broader landscape, I was struck by the complexity and exuberance of what was at my feet.

I love the chaotic lines that seem to crackle with energy and the underlying sense of colour and life emerging, even at that most desolate time and place.

*Andrew 'Miff' Smith*







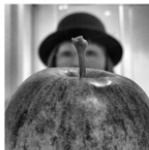
### Ice Detail, Roddlesworth Woods, nr Darwen

Detail from a small frozen cascade in Roddlesworth Woods taken during the big freeze in March.

*Andy Latham*







### Windblown Weeds

From the Kirstenbosch National Botanical Garden, Cape Town, South Africa. They have a special section just for weeds! Fuji XE1 (not my iphone for a change!)

*Anna Booth*





**In light, is life**

Deadvlei, Namib-Naukluft Park, Namibia

*Anna Duke*







## Illuminations on the Land

This is a special moment with a beer, and the view at Ullensvang, Norway. A view that inspired Greig to compose upon Henrik Ibsen's *Peer Gynt*.

*Anthony Plank*

"Deep in there, in the blue shadows,  
Where the valley blackens, like a narrow trench -  
And below, beside the open fjords -  
Isn't that where the people are tucked away?"

*Henrik Ibsen*





## From the land of Fire and Ice, Kirkjufell, Iceland

This was the first image which was made in Iceland after a 12 hour long journey from Southampton to Kirkjufell. And thereafter each place and moment I had spent during my visit, I was amazed by the raw natural beauty this country exhibits to us, which made me believe this country is truly "the land of fire and ice".

*Atul Kshirsagar*



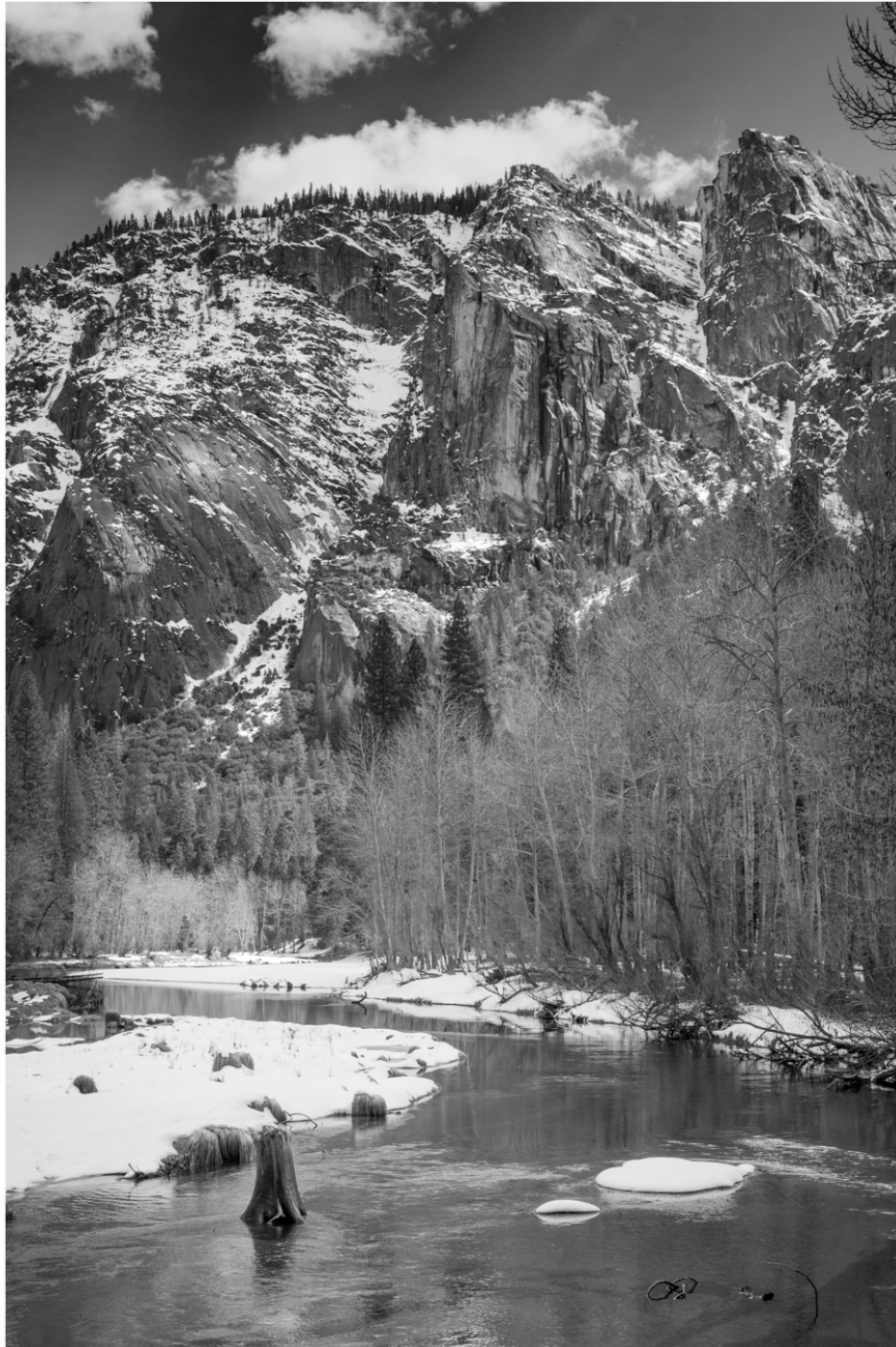


The East Cliff of West Bay from the Harbour Wall.

No dog walkers today, just myself and the drama of a winter storm.

*Barrie Foster*





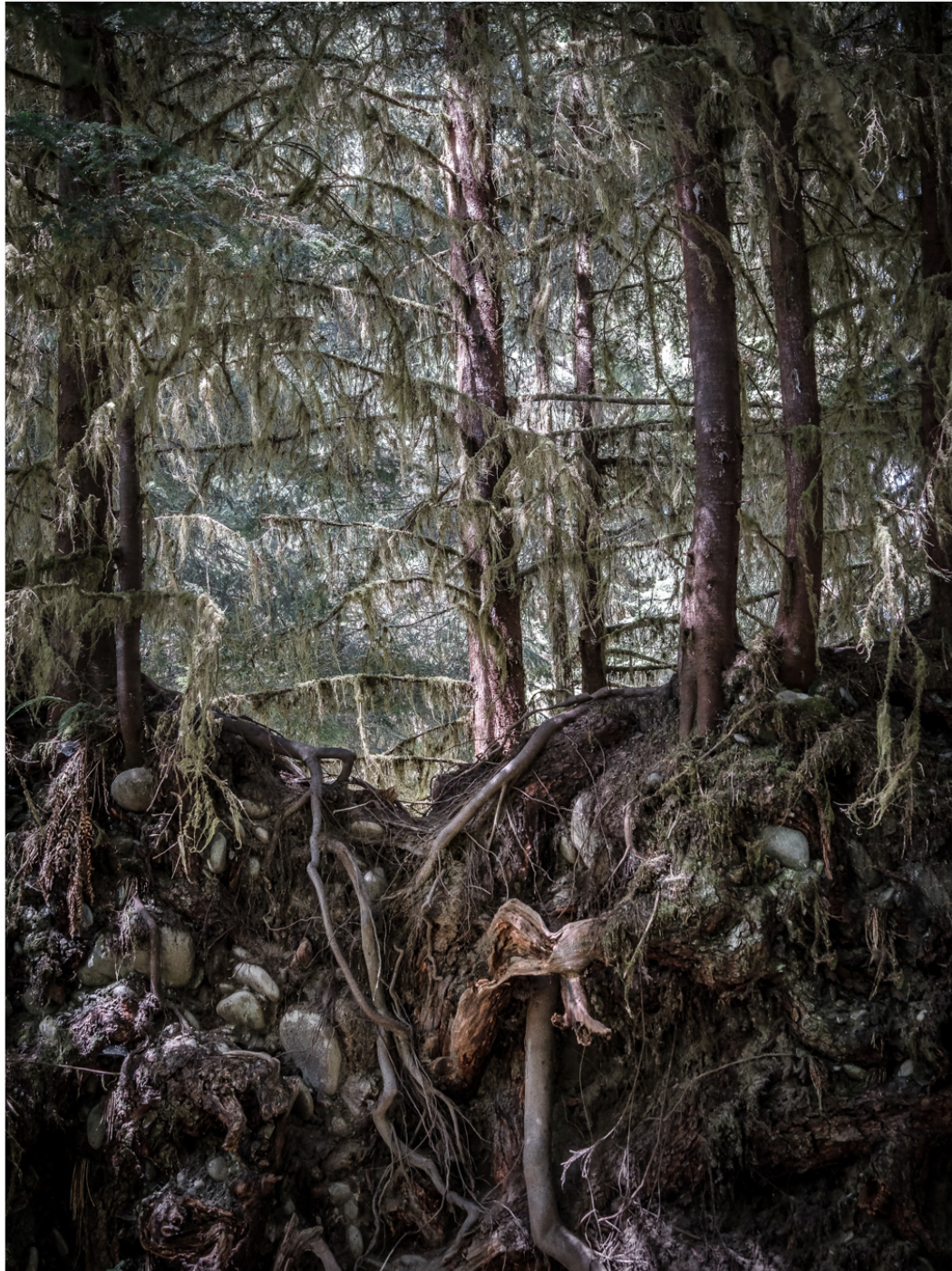
## March snow, Merced River, Yosemite, California

When visiting Yosemite (a long way from my fenland home) it wouldn't seem quite right if I didn't give homage to Ansel Adams.

*Bob Davis*







## Above and Below the Forest

Walking through the temperate rainforest of Washington State coast in the US, I came across an enormous fallen tree, which had long been the source of much new growth. The stony root system below contrasts with the trees growing above.

*Brian Collins*







## Under Threat at Aultbea

*Bruce Davis*





## Underbrush

This image was taken on a chilly day in late autumn and is one of a series of experimental abstracts taken in and around a naturalising boggy area at the head of a lake. Apart from sinking into muddy water and struggling to find secure footings for my tripod, my thoughts were occupied with making the most of the colours and textures of the area and how best to make a picture out of the apparently random underbrush. I'm still not sure about the composition or processing of this image, but I keep coming back to its swirls and depths...

*Carol Gregory*







### Loch an Eilein

Taken on a very blue sky day in the Cairngorm national park, using multiple exposure and intentional camera movement. Sometimes the weather forces the use of alternative techniques. Harsh sunlight would otherwise not have allowed the beauty of this place to be conveyed.

*Caroline Fraser*





## Church on Snæfellsnes

Taken on the Snæfellsnes Peninsula in Iceland. I like this picture for it's sense of scale and isolation, and for the uncanny appearance of the mountains, which look as though they have been drawn with a soft graphite pencil.

*Chris Ellis*





## Hastings Pier

An incoming spring tide at the remains of the original Hastings Pier in Sussex.

*Christopher Pledger*







## Escape to the Trees

This was taken in the Peak District just after Christmas, when the snow had fallen briefly overnight over the high ground. We pulled off the main road and I quickly retrieved my camera from the boot of the car. This group of trees with the wall leading to it attracted me to take the photo.

*Claire Gilbert*





## Enchanted Forest

This is the Quinalt Rain Forest in the Olympic National Park, Washington State. I photographed it in infrared which I felt captured more of the mystery of this place with the ferns and mosses growing on the trees. It is often very wet so it was surprising to see it on a dry day.

*Clare Collins*





## Enlightened

This image was taken while I was wandering on the salt marshes in North Norfolk. I'd been looking for interesting patterns in the muddy channels when suddenly the sun came out and illuminated a small patch of flattened grass on the other side of a tidal channel. I had to balance precariously half way down the muddy bank to get the composition I wanted. The light faded in a few seconds but I got the shot I was looking for.

*Darren Ciolli-Leach*





## Ynys Llanddwyn Dawn

Taken at Llanddwyn Island just before sunrise in early July, after an half hour trek from the Newborough car park. The lighthouses, Tŵr Mawr (on the right) and Tŵr Bach are both visible, together with St Dwywnwen's cross.

*Dave Glenn*





## A Subtler Vision

This is Dune 43 in the Namib-Naukluft National Park, Namibia. The dunes in this part of Namibia are named according to their distance, in kilometres, from the town of Sesriem. I avoided the popular Dune 45 and also waited until the sun had dipped below the horizon for less saturated colours and a gentler contrast between light and shade on the two flanks of the dune.

*Dave Mead*





## Kingley Vale

This image is of one of the ancient yew trees in Kingley Vale woods. This Hampshire woodland is unique as it is the largest yew woods in Europe. Yew woods are not usual as the trees are very poisonous to animals and therefore not normally cultivated. Photography in these woodlands is challenging due to the density of the trees and the contrast range.

*David Ashcroft*





## Approaching Sanday in the Inner Hebrides, seen from the Sound of Canna

Taken on board the Mary Doune, sailing from Knoydart to Canna in August 2018. Beyond Sanday is the southern end of the Isle of Skye.

*David Cole*



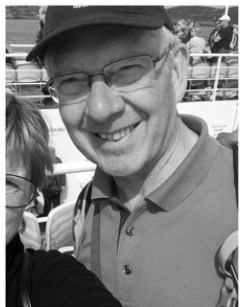


## Dawn at Trevoose

A dawn photo taken in March 2018 at Trevoose Head, Cornwall. It was windy with a rough sea and a subtle colour to the sky. I set up the tripod in a sheltered spot and tried several exposure lengths to get the effect I was after.

*David Eberlin*





## Three trees on the Eildons

The Eildon Hills are the remnants of a long extinct volcano which overlook Melrose in the Scottish Borders.

*David Hardwick*





## Kelly Hall Tarn

The early morning mist washes away over the fells as the sun breaks through a cold, crisp November sky by a small tarn on the outskirts of the Lake District. A still point, a pause, a moment before waking, a recollection of perfection imperfectly captured. Time to return and try again.

*David Knight*





## Stretching Tentacles

This image was taken on a dank day in March this year, in a wood just a few miles from home. Despite the dull conditions, the moss covered branches almost seemed to glow in the gloom.

*David Marshall*





## Dalzell Wood

Early autumn morning in the Trossachs. I was attracted by the contrast of the network of branches and leaves in the shade and the soft misty blue light on the marsh in the background.

*David Martin*







## Aspenophilia #61

This image was made near Aspen, Colorado, during the fall last year. After several days spent exploring more aspen groves than I can recall, I had grown to love these trees (hence the title) and the photographic challenges they presented. In this instance, I was drawn to the correspondence between the unusual kinked trunk of the tree on the right and the bough of its neighbour.

*David Muiry*







## Cloch Point

Only half an hour away from where I live .... and yet I had never been.  
A warm sunset on the Clyde.

*David Smith*





## The Rising, Chilworth, Surrey

This is one of my favourite locations in the Surrey Hills for misty morning photography. On this occasion I was fortunate that a flock of roosting geese took flight once I'd set up my shot.

*David Southern*





### First Exposure - Preston Riversway

This is the first exposure that I made with my new camera. I went out at first light to this location as it is only a mile from my home just to test the camera. The quality and detail in the RAW file were impressive and I am looking forward to making images with this camera.

*David Toft*





### Four Rock Pools

The light in the rock pools reflected cloud formations and the light in them seemed to add another dimension to this rugged rock formation at the beach. I used my large format view camera to take this image.

*Despina Kyriacou*







## Beach Road, Isle of Sheppey

We drove to the far end of the Island where I could not ignore the menacing clouds to the south.

*Diana Brindle*





## Zhangjiajie National Park China

Zhangjiajie National Park in China is reputedly the inspiration behind the floating islands in the film Avatar. This image was taken in April 2017 when weather conditions were excellent with low cloud surrounding the tree clad rock pillars.

*Duncan Locke*







### The Right Kind of Snow, Little Langdale, Lake District

I'm not normally one for treescapes, but last winter we were treated to what I call "the right kind of snow". For a few delightful hours it delicately clung to the trees and changed the drab landscape into a winter wonderland. On a ramble around the slate quarries this otherwise ordinary scene caught my eye.

*Ellen Bowness*





Woodland in the Novar Estate, near Cnoc Fyrish

*Emma Davies*





### Into Infinity

The early morning waiting game, striking the balance between the platform emerging in between the rise and fall of the waves and the lowering of the tide.

*Euan Ross*





## Snow way - Gran Sasso, Abruzzo, Italy

There is the snow, it's July. When I left Rome 4 hours ago, it was 35 degrees and now I can touch the snow with my hands. I took this photo at 2500 metres after hiking to Corno Piccolo. We are very small compared to mother nature. It is charming and incredible, she surprises me every time. Climbing high mountains, getting shortness of breath and feeling the sweat make me feel alive.

*Fabrizio Marocchini*







## Etch, Edburton Hill, West Sussex

The last day of a rare snowy winter in the South Downs National Park, and a favourite location reduced to the simple flow of lines and textures that typify this gentle landscape.

*Finn Hopson*





## Kelly Hall Tarn

I was introduced to this location in a workshop with Joe Cornish and Mark Banks. Staying on after the workshop, I returned hoping for some better light than we had previously experienced and was lucky for a few minutes as the sun dipped below the clouds.

*Geoff Kell*





## Flames

An early start for me and a bright frosty morning illuminated these Yorkshire Dales trees.

*Geraint Evans*





## View Across Wyoming

On reaching the top of a hill within the Yellowstone national park we were presented with this view of the far caldera rim.

*Gerry Kelly*







## The Barn, Mormon Row

Mormon Row is a line homestead complex in the south east corner of the Grand Teton National Park, in the valley of Jackson Hole. This image was taken at dawn in January 2018 at minus 28 degrees centigrade. Normally this image is taken at dawn with the early morning light on the Grand Teton range behind the barn however the freezing mist gives the barn a beautiful simplicity.

*Gill Hood*





### Water Ways: Faversham

My abstracted view of the world is one that's determined by an expression of personal feelings. I see 'life' in all objects, regardless of how inanimate they seem – a life that's hidden, waiting to be revealed. By challenging assumptions and taking advantage of the unexpected, the landscape becomes an imaginary place, providing an escape for both the artist and the viewer.

*Graham Cook*





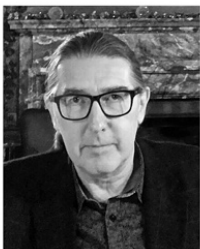
## Torre De Vajolet

I'll never forget this moment whilst staying at Rifugio Re Alberto. These towers are infamous amongst climbers but it wasn't until I saw them with my own eyes that I truly understood their majesty. Moments before this image was taken the landscape was being burnt scorched orange as the sun slowly set. However, as it briefly descended through a thin bank of cloud, just taking the edge off the colour and vibrancy, a small pocket of hill-fog rapidly formed and began to envelop these magnificent peaks. Serendipity.

*Greg Whitton*







## Cromer, Norfolk

Less than hour before taking this image I was cursing the brilliant sunshine a short distance inland at Felbrigg Hall. The helter-skelter glowed out of the mist looking out from the esplanade to the pier. May, out of season in Cromer...

*Gregory Irvine*





### Flaming June, Knoydart, Scotland

Landing by boat on the western edge of Knoydart, with photographic forays inland repelled by midges, I walked the strand line instead and spotted this pebble cosseted by dried kelp and made this semi-macro image.

*Harvey Lloyd-Thomas*





## The Storm

Taken by Llyn Tegid Lake, Bala. Worth the soaking to capture the power of the passing storm.

*Helen Iles*



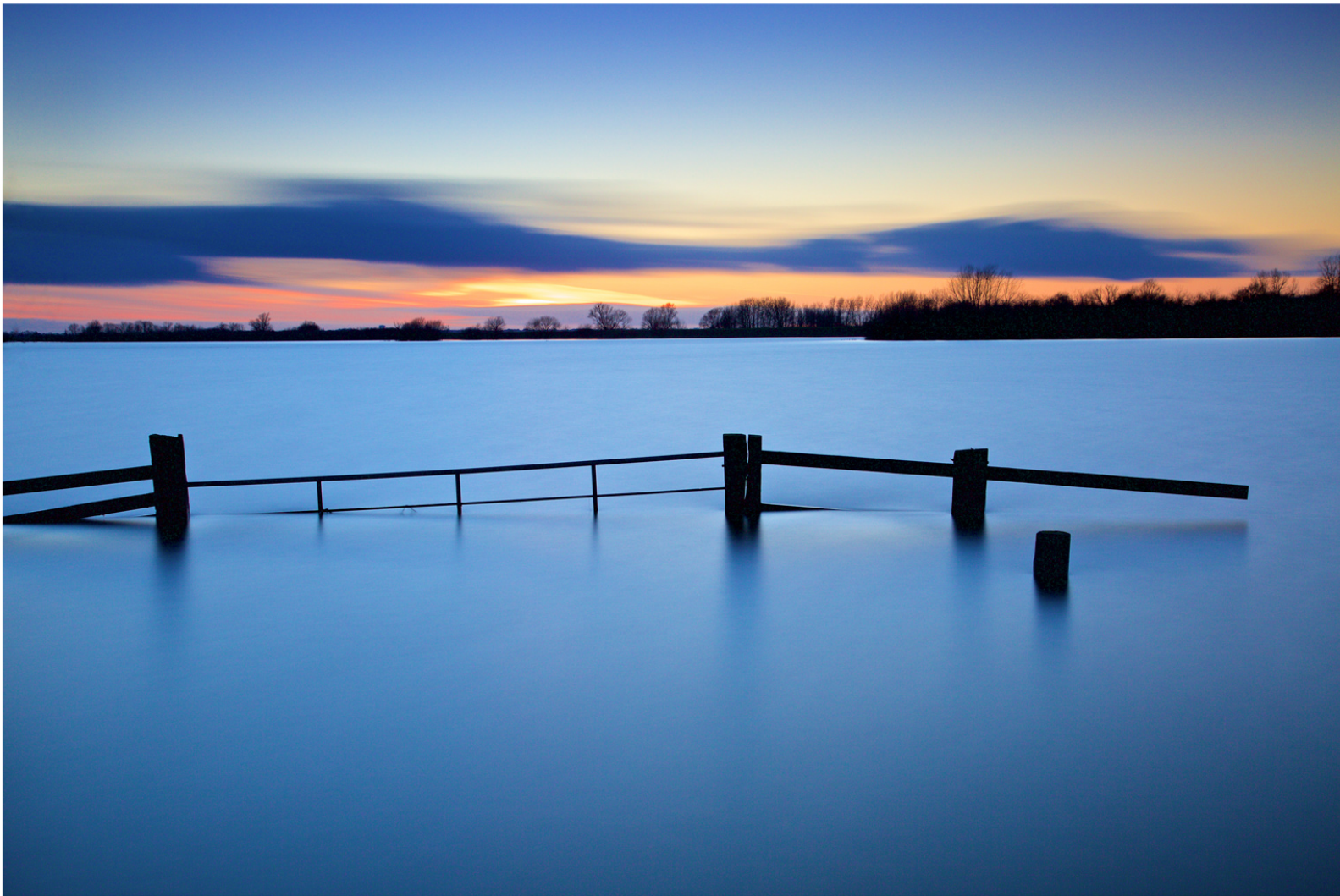


## Old Cypress Grove, California

In the marine layer.

*Ian Moore*





## Lost Gate

The Ouse Washes, just a mile from where I live, is transformed during the winter months as the area between two man made rivers, The New and Old Bedford, is deliberately flooded by The Environment Agency to safe guard the surrounding areas. During the summer photo opportunities are difficult but when the water comes, the photo opportunities are endless.

*Ian Stacey*





## Sunshine above the shower, Bamburgh Castle

On Ross sands, walking back after visiting the seal colony, this threatening shower blew in fast, dark and menacing from the west, leaving a lot of light above and below. Bamburgh Castle shows to give perspective to the magnitude of our atmosphere; just to remind us how insignificant we are when faced with the power of nature and weather.

*Idse Herrema*







## Last Leaf Taken

Last Leaf Taken on a late November afternoon in Borrowdale, Cumbria, as the wind died and a beautiful calm settled over the lake.

*Ingrid Popplewell*







## Humbled by Landscape, Iceland

My working practice is mainly drawn to the sea and nature, while inspiration often comes from travels at home or further afield. This image, taken in Iceland as part of a series, hints at the ongoing story of nature versus humankind. The abandoned farm is dwarfed by the massive cliff face where the red colour of iron oxide around the cascading waterfall is echoed on the rusting roof of the building below. The physical experience of this fascinating landscape is heightened through personal memories, historical ideas and mythical sagas.

*Irene Fearnside*





## Springtime Veil

Abstract image taken in Spring of birch trees overlooking a fishing pond in my local woods in the Forest of Dean. I used ICM and multiple exposures to create a more impressionistic image to highlight the delicate shapes and colours of the leaves against the water.

*Jane Simmonds*





## Lake Mashu, Hokkaido

Lake Mashu is a caldera lake in Akan Mashu National Park. This image, from the First Observatory, was made in early February, towards the end of a 9 day tour with aspect2i.

*Jim Souper*







## The Mountain, the Moraine and the Glacier

During a memorable Arctic sunset, I saw this moraine which got nicely lit and gave a beautiful contrast between the mountain and the glacier. This great separation of landscape layers has been captured while on expedition in the Scoresby Sund fjord in the eastern part of Greenland.

*Joel Monster*





### Tangled Tree - Aysgarth

Aysgarth Falls are a familiar hunting ground for landscape photographers - and I duly came away from this trip in February with the requisite shots of the water cascading over the rocks. But I was more pleased, and fascinated by, the way the low Winter light of late afternoon still found its way down into the gorge - picking up details like the tangled branches of this tree against the dark wall of rock behind.

*John Clifton*





## View over Grasmere

Taking the road out of Grasmere towards Loughrigg Tarn you come to Huntingstile, the old family home of the Wordsworth family. A footpath starting behind the house takes you to Huntingstile Crag, with wonderful views of Crinkle Crag and Bow Fell on the one side and up the valley towards Thirlmere and Keswick on the other. This view is over Grasmere with Helm Crag on the left and the Thirlmere Valley opening out behind.

*John Harper*



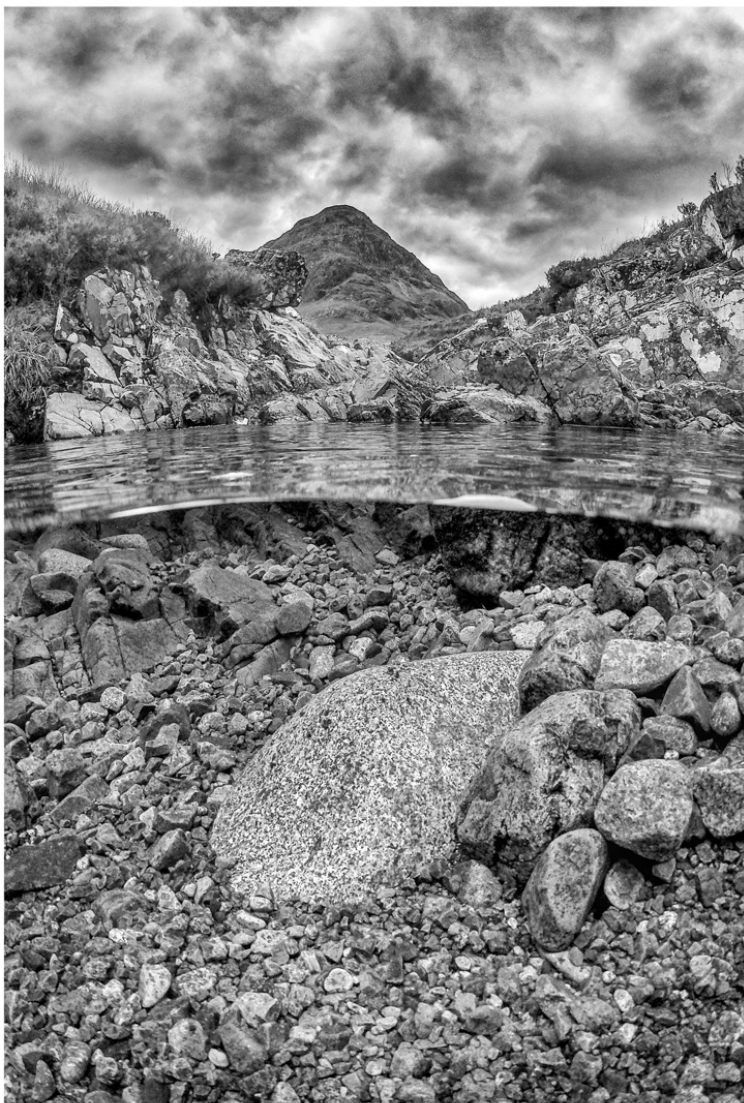


### Defeated, Glen Affric, Highlands, Scotland

I came across this huge dead Scots pine in Glen Affric and it reminded me of a fallen warrior on the battlefield. Once strong, now succumbed to its fate.

*John Illingworth*





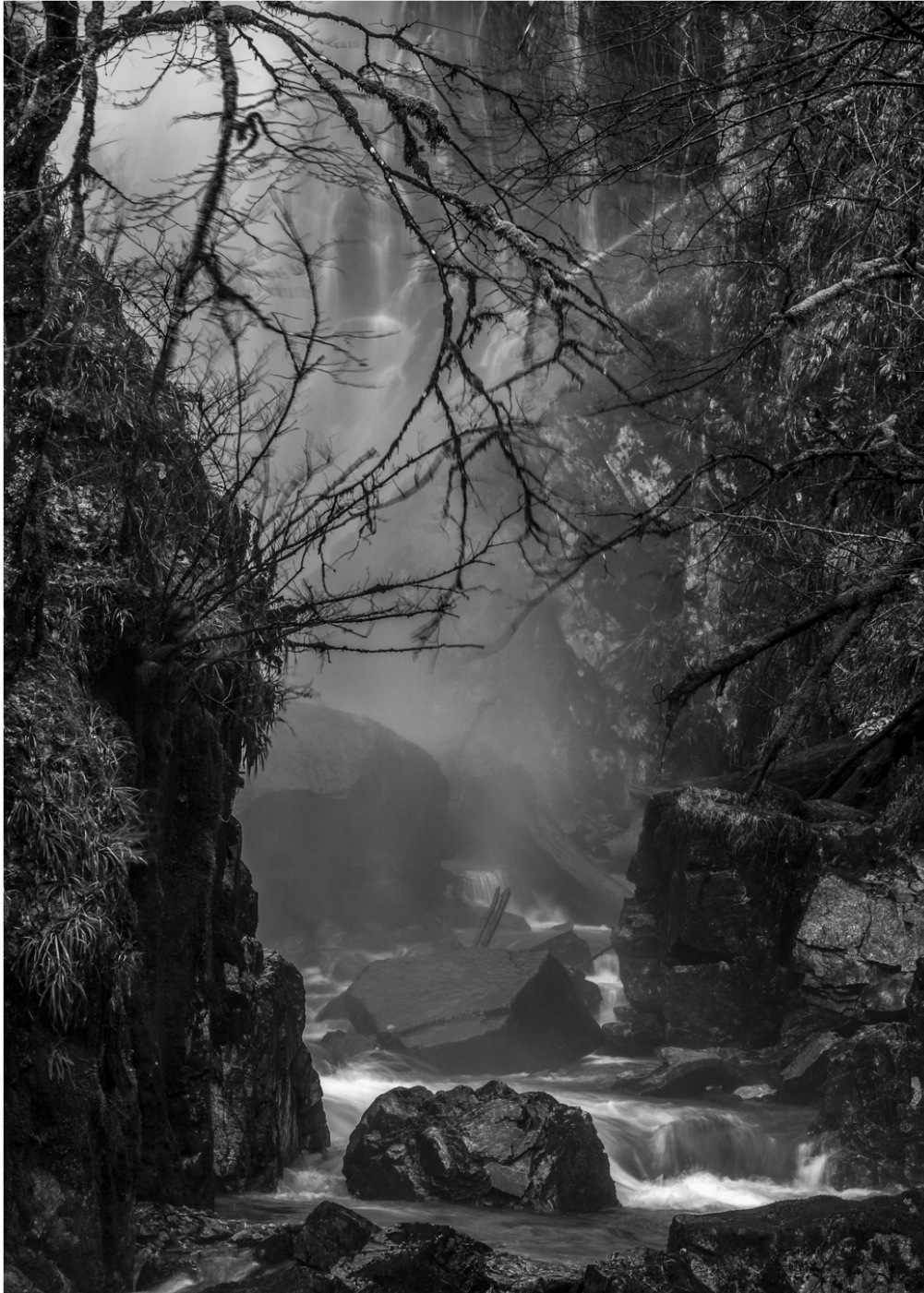
## Below Buachaille Beag

I diverted to drive through Glencoe on the way up from the Lake District to the Cairngorms in June this year. It was near midday with flat light and cloud so I thought I would try a different approach to a familiar scene.

The over-under, split images from the Coupall river give a glimpse of the under-rock echoing the mass of Buachaille Etive Beag in the distance.

*John Macfarlane*





### Grey Mare's Tail, Kinlochleven

Taken on a cold, wet and windy day in January 2018 (remember that winter?) the feeling was one of brooding mystery, with the play of the light being emphasised by the dense swirling spray from the waterfall. I think the black and white representation helps to reinforce the emotion of the scene.

*John Maltas*







## Snow Tree

Taken in January half a mile from home.

*Jon Lewis*





## Iceland, early May

A cloudy day with a limited colour palette, and an omniscient presence of water asserting itself to all the senses.

*José Sousa*







## Harris Blues

What can I say about the Isle of Harris that hasn't already been said? A magical landscape to explore and photograph, and somewhere that draws me back year after year. The Gin's not bad either.

*Joseph White*







## Pathside Sculpture, Cornwall

Landscapes are what you see in them. They are not necessarily exciting, wild places and in the UK are man-made and often include people. Time-restricted on a recent family holiday and having to use whatever light there was, I started looking for more unusual subjects. This image was taken on the coast path near Tintagel where I was surprised by the 'street furniture' at the top of the cliff.

*Judith Kelly*





## Autumn Colours in Troutdale

'The fleeting hour of life of those who love the hills is quickly spent, but the hills are eternal' ~ Alan Wainwright.

*Judith Plank*



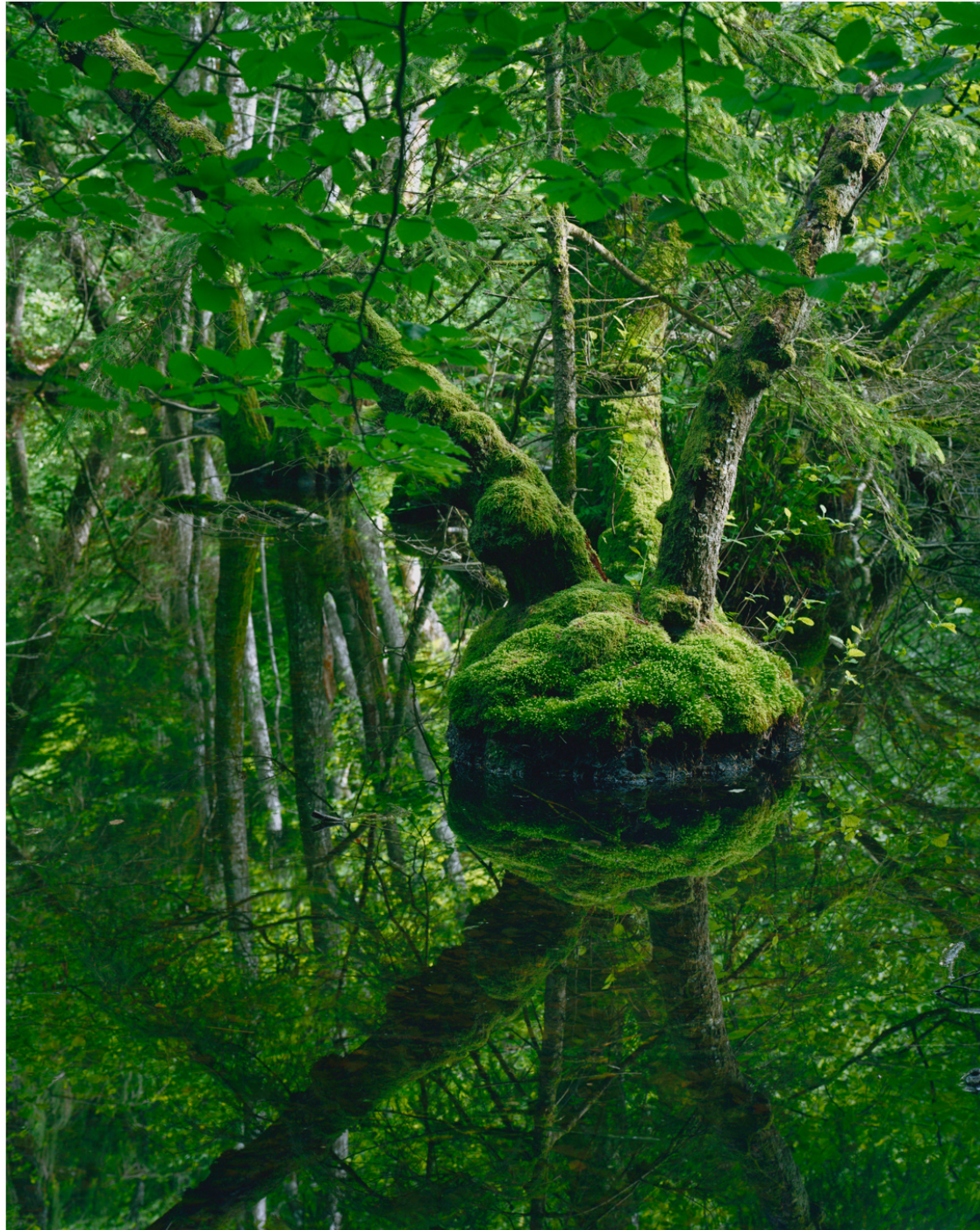


## Aire Force

The red Rowan berries against the white water caught my eye. As it was a fair way away, I did not see the branches reaching across to each other and all of the detail on the right hand side was a lovely surprise when it emerged in Lightroom. Several people have commented that it feels Japanese but I think it is a very British scene.

*Judith Sharrock*





## Island

This part of the Bois de Chênes in Canton Vaud, Switzerland, is known as 'The Duck Pond'. There were no ducks visible on my visit but the place had something of the feel of a tropical swamp - although a great deal smaller in scale!

I was lucky enough to get just the right amount of hazy sunshine to give texture to the moss and bark whilst retaining enough softness to keep contrast to manageable levels.

*Julian Barkway*







### Golden hour in Kinlochleven, Scotland

Last image from my trip to Scotland in Kinlochleven, near a path to Meall an Doire Dharaidh.

I think it quite well describes how this trip went overall. By embracing the Scottish rainy summer weather and waiting for a 10 second break between strong wind gusts, I've captured a nice vista of the Highlands to pleasantly conclude my travels.

*Justas Trimailovas*







## Once Loved

I first photographed this lovely old boat located at Hejls Nor in Jutland; Denmark in 2002. In 2016 I returned and was sad to find that this old fishing place had been "developed" into a residential area. To my surprise the old boat was still there lying in front of the new buildings. I could not resist photographing it again, this time trying to focus on color, shape and texture.

*Kaare Selvejer*







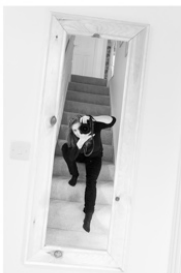
## Line in the Sand

Frost settled on Mablethorpe beach in December, glistening in the sun, white against the lightness of the sand and the darkness of the shadows. The wind created rich textures and geometric patterns. The silence and the gentle breeze in the early morning were most welcome.

*Karen Thurman*





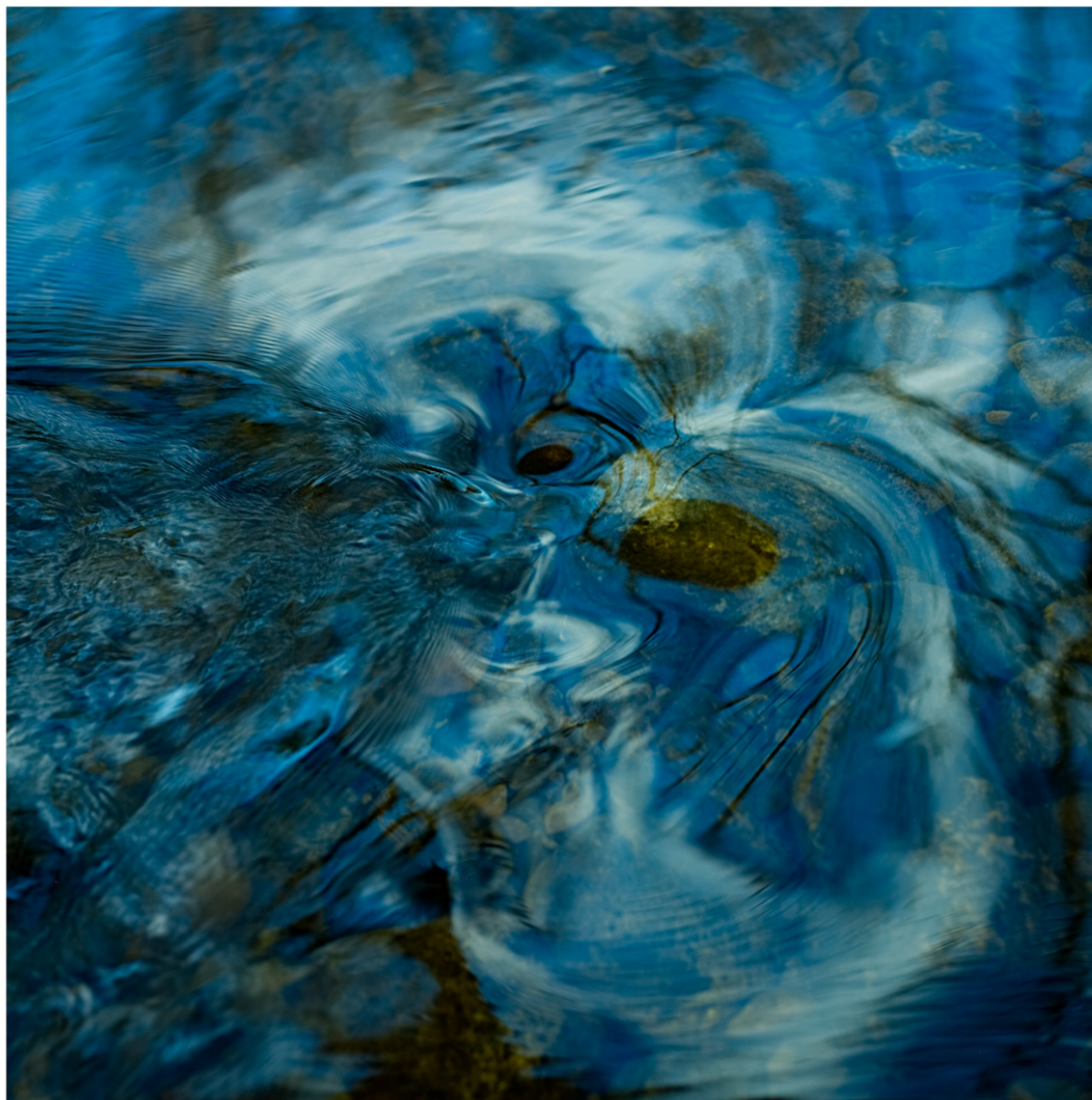


## Out of the Blue, Shingle Street, Suffolk

At mid-tide it is possible to walk out on a shingle spit and look back at the cottages, known as the Beacons, which hover on the brink of the North Sea. This was my first outing with a new Lee Big Stopper, which saved the day, as it broke to a bright and cloudless sky.

*Kate Maxwell*





### Reflected Light

River Eden at Shoregill in Mallerstang. Late afternoon with a clear blue sky.

*Keith Beven*





## Littleham Cove

I was in the area doing family history research and briefly stopped at Budleigh Salterton to grab some handheld shots to stitch into this panorama of the storm moving in.

The sea looks a little toxic from the red mud, the cliffs at Littleham Cove are known for their radioactive uranium nodules and the Marines have a firing range...perhaps not an inviting picture, but a record of where my ancestors sailed.

Littleham Cove is at western end of the Jurassic Coast, with the Exe estuary and the South Hams beyond.

*Kelvin Richards*





Rock Pool, Spittal

*Kevin Fidler*





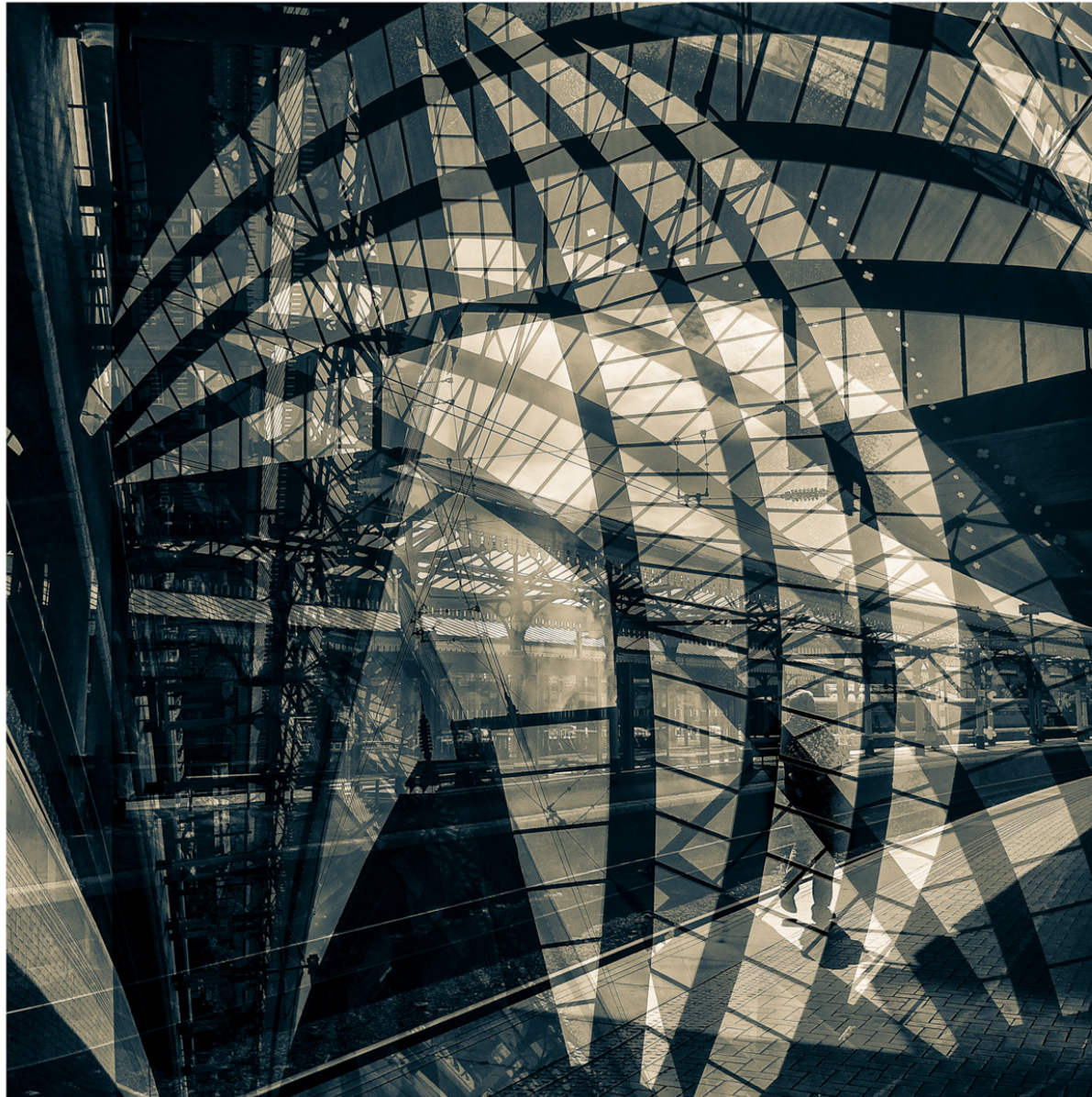


## Looking for Gormley

I took 'Looking for Gormley' on an early morning trip to Margate where there is a single figure in the sea. However, I clearly didn't get my timing right and he was fully submerged! Rather than waste the journey I took 'Looking for Gormley' as a reminder to be more organised with my time management.

*Lesley Amos*





### York Station as I see it

The curved roof of this station has fascinated me since I was a child setting off on family holidays full of joy. Travelling up to Edinburgh recently gave me a different perspective of it and a multiple exposure gave me the abstract image I felt showed the curves and complexity of the structure.

*Lesley Peatfield*





## When the Snow Settled

Snow is on the forecast, a rarity along the south coast and it will not stay for long, so best to get out quick and make the most of it. I wanted to capture something a little different so ventured to a wooded area near Duncton in West Sussex, where there are some lovely trees amongst the rhododendron. This is an image made up of ICM and multiple exposures, in camera.

*Lorraine Heaysman*





## Sligachan Reflections Travelling through the Isle of Skye.

Despite very overcast weather in Sligachan the opportunity for an image was too good to miss.

*Margaret Ford*







### Autumn Light

I took a break at the end of a tiring morning of image capture at Derwentwater. After some unfocused relaxation, I suddenly became aware of the clear reflections in the sheltered inlet I was sitting by. Hardly a ripple.

I climbed down to a low promontory above the water's edge, and set up my tripod and camera to capture this image. Later in Lightroom, I flipped the image 180 degrees, and needed to do little else to create this impressionist, otherworldly effect.

*Margaret Ridgewell*





## Wings and Waves

I have been capturing the movement of birds using long exposures for a few years. During the winter storms the gulls were flying and dancing above the waves. A brief moment of sunlight lit their wings and the waves perfectly.

*Margaret Smith*





## Scarista Waves

My connection with this image goes beyond the final work and is affected by the experience I had whilst shooting. One of the wildest, stormiest days I have experienced on the Outer Hebrides, battling against sand storms and rain, I remember the euphoric feeling of shooting images that I loved in a place that made me feel alive and happy. As well as drenched to the bone.

*Margaret Soraya*





### Calmness

On seeing this arrangement of cloud and vapour trails in a clear blue sky, I stopped the car and composed for a square in B&W to mirror the calmness and serenity the scene brought to me. I can still hear the skylarks singing high above this field.

*Matt Horstwood*





## The Burg from Kintra, Isle of Mull

The view across the mouth of Loch Scridain to the massif called The Burg, as seen from the shelter of the bay at Kintra, on the Isle of Mull.

The pink granite so typical of the area seems to come alive when lit by the setting summer sun.

*Matt Lethbridge*







### Evening Reflections

A photograph taken at a local pond within walking distance of my home. This particular evening was so still there were no ripples on the water. So the sunset and clouds were reflected in the water.

*Matt Pitts*





## Sussex Sea Poles

Close to the site of the old Shoreham Power Station to which the structure related, these posts have become a popular subject with photographers. I chose to position myself to ensure a symmetrical arrangement of the posts but offset them in the frame to include the shimmering light on the sea to the right of the poles.

*Maurice Ford*





## Conquering the Needle

After 6 months of planning, I mentioned in work I was desperate for a strong climber. Sam overheard this conversation and the next morning we parked at the base of the Hard Knott Pass in the Eskdale Valley. On the walk, I fell onto some rock hard ice, scraping my thumb pretty badly in the process. Sam summited Eskdale Needle without any ropes as the morning light graced the flanks of Scafell.

*Michael Hirst*





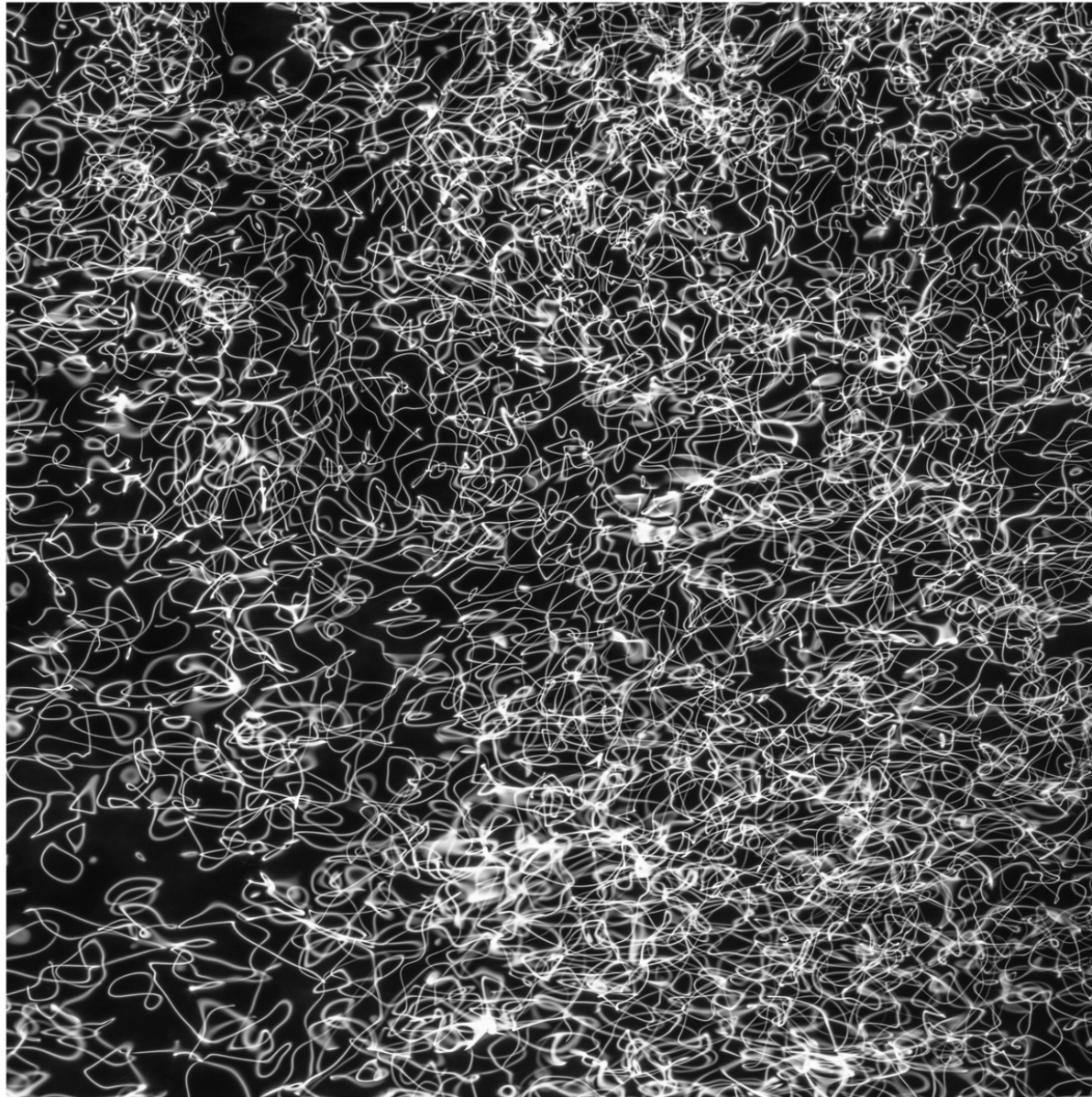
## One Tree

This is a scene from my local patch that I have walked by for many years, until that morning. Compositionally I like the way the line of the frozen water flows through the riparian vegetation, from fore- to background. The mood is enhanced by frost and mist. Of course, the mist also simplifies the image by isolating the tree from its background.

*Michel Lucas*





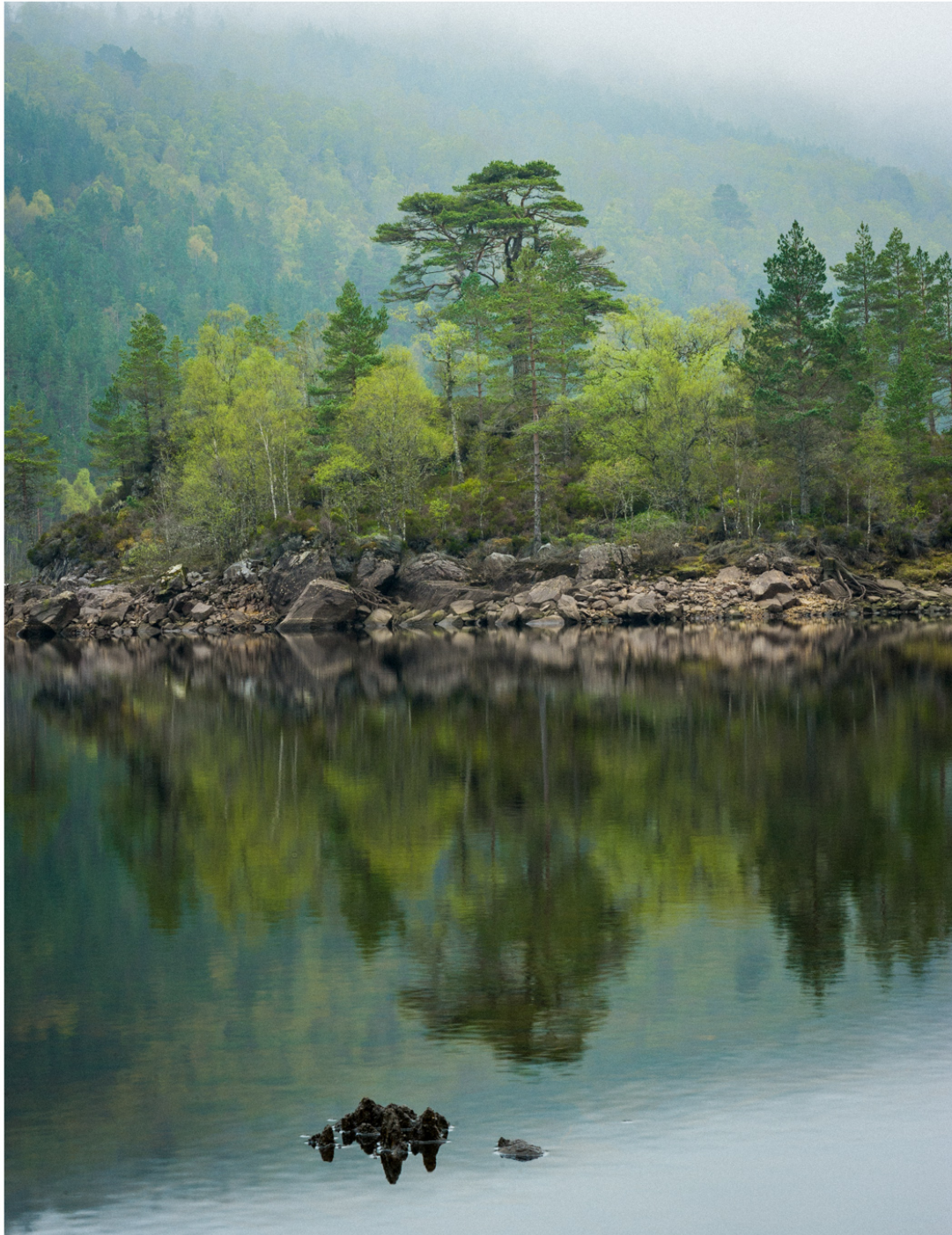


### A Memory of Water, Peak District National Park

Six years on, I'm still working the same short stretch of the River Dove; its waters remain my muse and I continue to look for ways to interpret them. New images prompt me to think about the representation of light and shadow. What if the shadow is the substance? When it has gone, all that remains visible is the sunlight, marking the ways taken by the water: a memory, a memory of water.

*Michela Griffith*





## Reflections 1

In the early morning, with hardly a sound in the air, spring mist shrouding the hills and a perfect calm on the surface of the water I was at peace looking over Loch Beinn a Mheadhoin in the Scottish Highlands. In that moment I was struck by the mix of greens in the foliage of the silver birches and Scots pines that line the water's edge.

*Mick Thurman*







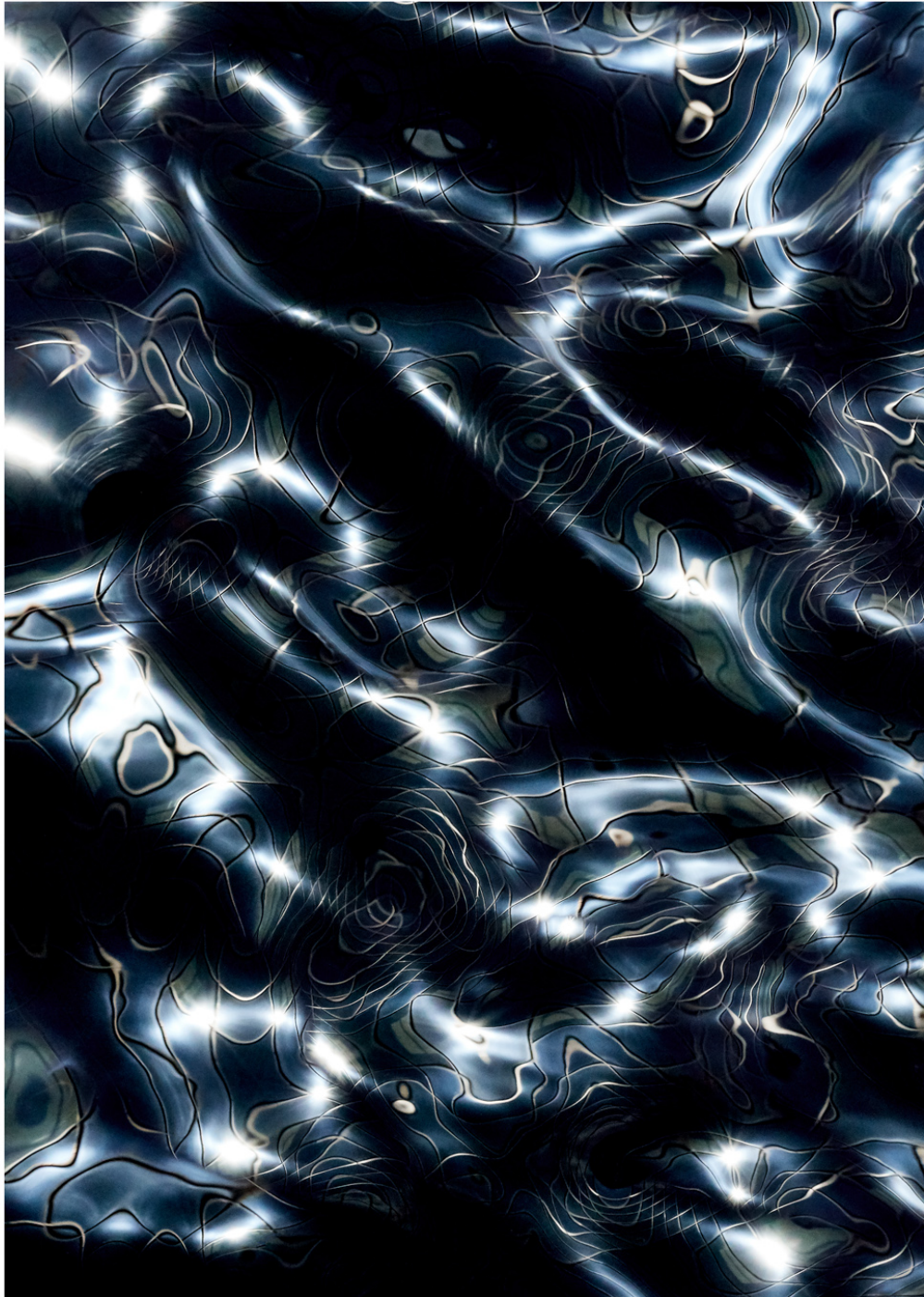
## Tuscany Landscape

With a small group of photographers, guided by Tom Mackie, we happened upon a remote farmhouse near Pienza, Italy. I thought Poppies in the foreground and a fine display of cirrus clouds made for a pleasing composition.

*Mike Brindle*







## Metallic Silk

A reflection of a building at South Quay in Canary Wharf in London ñ an in camera multiple exposure (no Photoshop used). I ended up taking 999 photos of the same scene but only ended up with one that I liked.

*Mike Curry*







## Wicken Reflection

A kestrel hunts above Wicken Fen as the tranquillity of a summer's afternoon is reflected in the lode.

*Mike Daines*





## The Nose - Delamere Forest, Cheshire

I live close to Delamere Forest, where recent tree felling and re-flooding of old meres has formed a unique wetland environment and plenty of local photographic opportunities! These changes have created eerie woodland scenes with fungi growing on dying trees giving the feel of "prehistoric swamps".

This image, taken on a late afternoon in January, is named the NOSE due to the fungi shapes.

*Mike Lloyd*







### Murlough Bay — Towards Slieve Donard

This is a picture made on Murlough Beach, a National Nature Reserve on the north coast of County Antrim, Northern Ireland between Fair Head and Torr Head. The view is towards the Mourne Mountains towards the highest peak, Slieve Donard.

The picture was made in October 2017, during the sun-bathed aftermath of a violent rain storm.

*Monty Trent*





## A nice day for a storm

The waves dashing against the rocks seemed to mirror the movement of the clouds being blown quickly across the sky. I also liked the fact that the beauty of the blue sky and fluffy white clouds belied the force of the wind and violence of the storm.

*Morag Cordiner*





## Callanish Stones, Isle of Lewis

I took this image in September 2017 during a holiday on the Isles of Harris and Lewis. I arrived early in the morning to avoid too many people walking among the stones. There is a small (and very good) cafe next to the site and as soon as it opened it became fairly busy, so I decided to pack the camera away and have breakfast.

*Nadja Wendt*





## Magnificent Slovenia

Every year I go with friends to climb in the Alps, two years ago we chose Slovenia and instantly fell in love with this beautiful country. We went back this year to once again enjoy its pristine mountains.

*Neil Armstrong*





## End of the day

I am fascinated by the accidental beauty and narrative potential in the juxtaposition of banal, human constructs and their landscape. Such constructs are not about elegance or luxury but about the minimum required to survive. Yet they can appear sculptural and purposefully positioned, like an artist's installation.

This scene, in Puglia, Italy, has all the elements that excite me, crude geometrical shapes against a soft background, a calm, still atmosphere, feelings of solitude and lots of questions about what, why and who created it.

*Neil McCoubrey*





## Leaving Yell

We left Unst, the most northerly inhabited island in the UK, by ferry. The route south to the Shetland mainland then takes you across the island of Yell to a second ferry. As we approached we could see that the ferry was in and the light was fantastic. So I pulled up, at the risk of missing the ferry, jumped out of the car and grabbed this shot from the middle of the road. Luckily we got the ferry as well as the shot.

*Nick Browne*



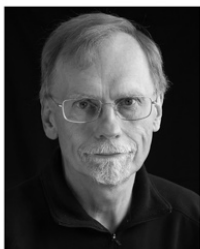


## The Big Pit, Blaenavon

The pit head is why Blaenavon and its residents exist, down in the sunny valley below. No longer a working mine, it still employs some of the veteran miners, to show visitors around what is now only a tourist site.

*Nick Heissig*





## Woodland Floor

"There's no such thing as bad light". Harsh summer light produced wonderful dappled shadows in the woods. This is my attempt to capture some of the feeling of the place.

*Nigel Norris*





## Seaton Sluice, Northumberland

Seaton Sluice, Northumberland, has a special light of its own, expansive beach and huge skies. My playground. Timed for the dance of Lady Lune rising and the Sun King setting, X marks the spot of their passing wistful kiss.

*Norma McKellar*





### Predawn Storr, Isle of Skye, Scotland

The early awakening at 03:20am helped me to be on top long before dawn. Soft predawn light, picturesque clouds and windless weather had become a bonus for my perseverance.

*Oleg Ershov*







### Sleeping Dragons

I was standing among the long grass on a steep cliff edge at White Nothe on the Jurassic Coast. As the sun started to rise, it poured through the layers of the rolling hills. It only lasted approximately 5 minutes but it was worth every minute of the 4am drive.

*Owen Vachell*





## Savernake Forest

I've always found woodland shots difficult - too much chaos! But the mysterious figure at the back helps make this one work for me.

*Paul Graber*





## Water Rock

Taken in October 2015 in Cornwall very close to the well known beach at Porth Nanven. The waves crashing in were quite impressive that day, but what caught my eye and imagination was the moment afterwards.

Timing was crucial to not have a white-out of water and spray, but to have enough water apparently pouring out of the rock.

*Paul Harrison*





## Dancing Parsley

Millington Pastures, East Riding of Yorkshire

Predicting how these flower stems of cow parsley would behave in strong wind is virtually impossible but with a little bit of good fortune I managed to achieve the perfect moment when the speed of the shutter and the movement of air created the dynamic swirls I'd been after. The strange thing is that this was the first shot I took, the following 5 attempts were complete failures!

*Paul Moon*







## Glen Orchy

An image from a dreich January afternoon in Glen Orchy.

*Pete Hyde*







### Visionary Elegance

"No man has the right to dictate what other men should perceive, create or produce, but all should be encouraged to reveal themselves, their perceptions and emotions, and to build confidence in the creative spirit." Ansell Adams. Sometimes you just have to look at the world differently so I just flipped this image upside down to give a totally surreal perspective on a beautiful Lakeland scene.

*Peter Bindon*





**Oil sheen on saltmarsh, Saltfleetby  
Theddlethorpe Dunes National Nature Reserve, Lincolnshire**

This occurrence can occasionally be seen on stagnant water amongst vegetation. Here microbes living in anaerobic conditions produce hydrocarbons in the form of oil, which float to the surface and create an iridescence of colour.

*Peter Roworth*





## Arctic Summer Morning - Skagen, Lofoten, Norway

After many years as environmental professionals working hard on Norwegian developments it was time to visit for a holiday!

We love to combine camping in the wild, travel and photography. This shot was taken on a stroll from our beach campsite before breakfast, during a break in the weather, pursuing a theme of strong foregrounds and balance.

*Peter Russell*





## Autumn, Ashridge Forest

This image was taken in the beautiful Ashridge Forest in Hertfordshire. The image shows the forest but is really about the onset of autumn. Taken in October, the leaves have started to fall and the colours turn from green to brown. The early morning mist has softened the colours and created the atmosphere.

*Peter Stevens*





## Sapling in blue

Taken at Micheldever Woods, Hampshire, on 3rd May 2018

*Philip Davis*





## 9 Hikers Glencoe

9 Hikers Glencoe has been my favorite part of the Scotland. I've often hiked or the so called "bagged" munros here. This time though it was a family holiday. When we were going back to our cottage it had started to snow which turned into a blizzard quickly. I met these hikers at the lay by and had a chat. I was obviously envious. I decided to wait for a photographic opportunity and it paid off.

*Prashant Khapane*



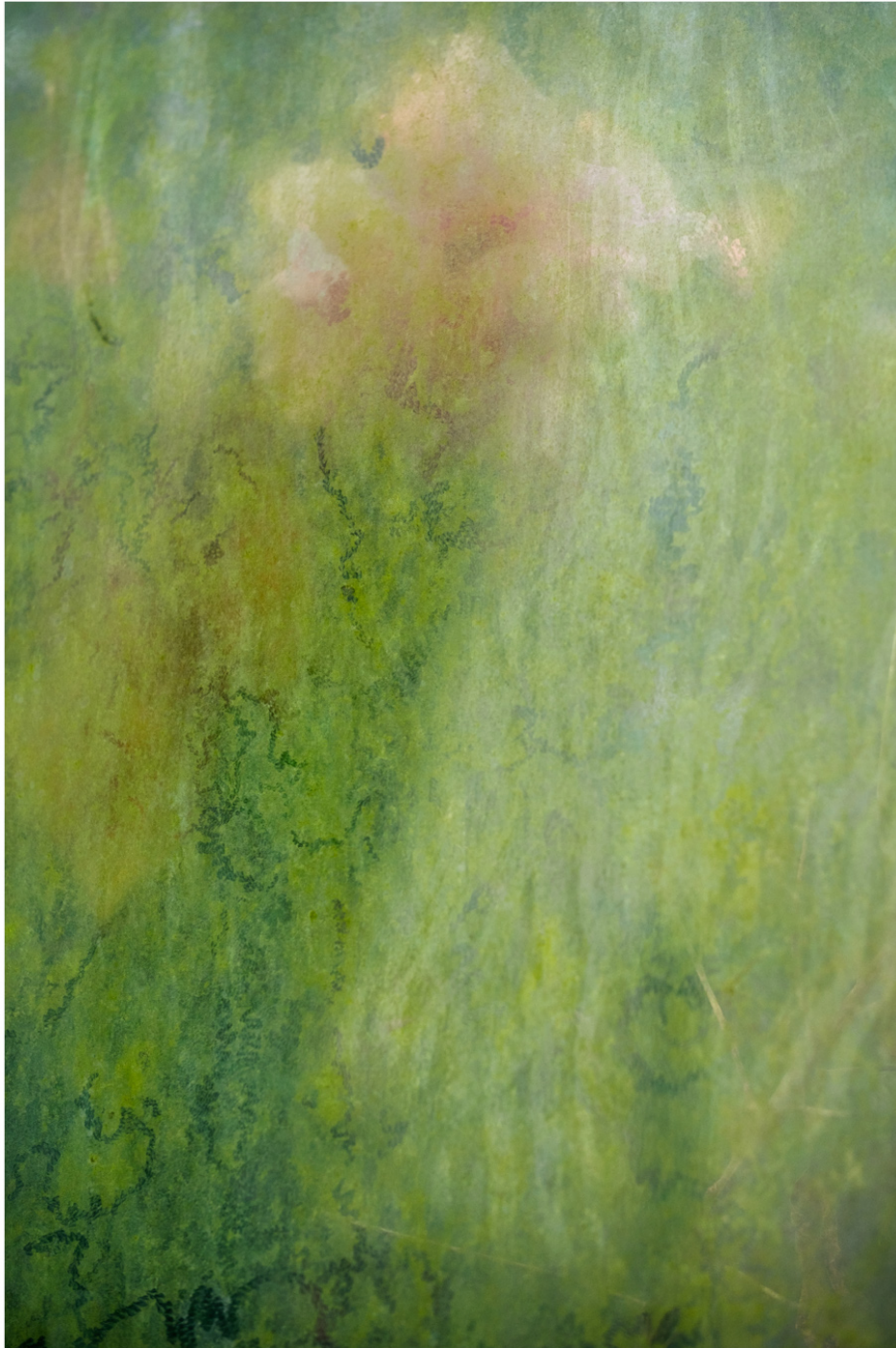


## Lava Island

A view of Ponta Delgada and Ribeira Grande, São Miguel, Azores, at sunset. This was taken at around 10pm in one of the very few cloudless nights I got. The greatest challenge was the strong sudden gale which forced me to dig the tripod into the ground.

*Raul Carneiro Martins*





## Life in a Glasshouse

This recent series was taken in the slightly dilapidated Jardim Botânico in Porto and contained some of my favourite elements, flowers, time, diffuse imagery and abstraction. This was the final image and perhaps my favourite of them all.

*Richard Earney*





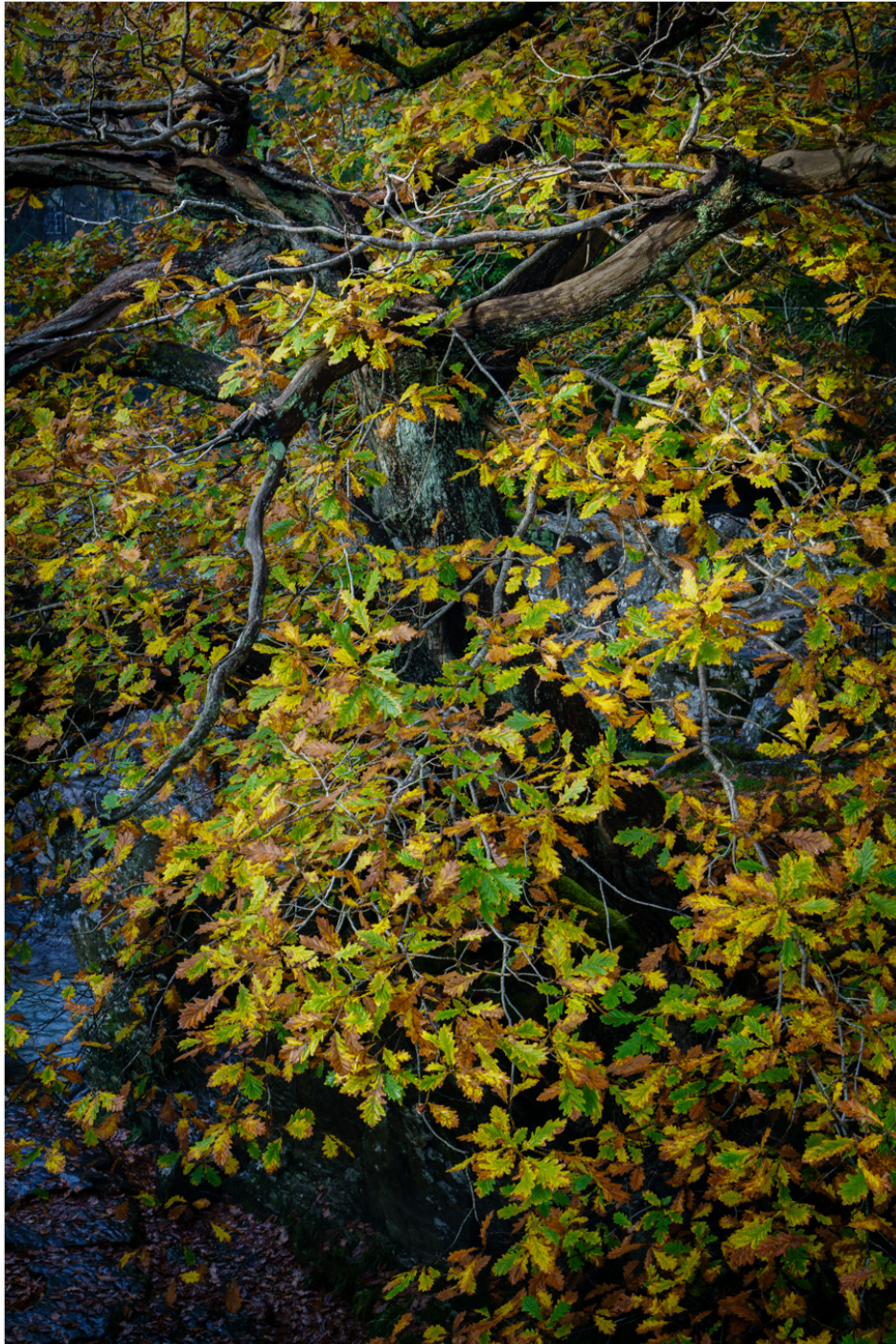


## Blue Dusk

The hut on the Fagaras Ridge in Romania was too crowded and noisy. Taking photographs outside I liked the contrast of the jagged ridge we had climbed that day and the peace of the mist settling in the valleys beyond.

*Richard Garlick*





## Autumnal Oak

The Afon Llugwy is a beautiful river that flows over a series of falls through Betws-Y-Coed in Snowdonia. As I walked onto the bridge that crosses the river in the middle of the village I could see lots of tourists and the odd photographer scrambling around under the bridge taking images of the impressive falls. However, it was the autumnal leaves and gnarled branches of an old oak tree at the side of the bridge that attracted my attention and I spent quite some time standing on the bridge making a few rather intimate images.

*Rob Oliver*







## Fenland Poplars

It was one of those grey and windy February afternoons which keep you on the move to avoid the chill and where the dog is wondering how long this is going to last. These trees overlook a bay which was filled with visiting waterfowl. Standing out of the wind I was looking for a reported Smew among the hundreds of Coot and Tufted Ducks. The sounds of clicking branches and rustling dried reeds formed the accompanying soundtrack to the noisy birds and made for a relaxing moment when my immediate surroundings become part of the felt experience and the picture just came about without much conscious thought.

*Robin Jones*







## Red Oak Avenue

This image is part of a long-term, large format project at Thorp Perrow Arboretum, Bedale, North Yorkshire. Many months before I was able to capture it, I caught a fleeting glimpse of this scene, but the ethereal lighting lasted only a few minutes and I was unable to set up in time. However, my continued visits whenever freezing fog was forecast were finally rewarded one mid-January morning. I still missed the first sighting, but, undeterred, left the camera in position and waited. Two hours later the sun burned through the fog creating the effect I had been seeking.

*Rod Bennington*







## Blea Tarn

A very well known viewpoint but it illustrates the importance of being there at the right time. Driving up the valley around 5.30 one morning, I thought I was too late as the clouds were coming over quickly. No sunrise, despite it being a cloud-free week up to then. But the clouds did part, though only for only a few minutes and not long after taking this shot you could see nothing but cloud across the tarn.

*Roger Backhouse*





## Norwegian reflections

These small lakes on the peninsula near Tromsø, adjacent to Norwegian woods in the pinnacle of their autumnal glory, were sheltered and mirror calm in the evening light. Living in the Lake District, I frequently capture "perfect" reflections, and love the way that it is often difficult to distinguish where reality fuses with reflection, but I took pleasure from this picture because of the slight ripple that feathers the middle waters with the far shore, in contrast with the solidity of the foreground rocks.

*Rosamund Macfarlane*





### Wimborne Barley Field

I passed this field of barley on the way to a different location when I noticed the tractor tracks made this very interesting composition.

*Roy Fraser*





## Buttermere

Unexpected sunny reflections on Buttermere looking south towards my favourite fell Hay Stacks, in May.

*Ruth Childs*





## Llynau Mymbyr

The Beautiful Llynau Mymbyr is set amongst Snowdonia's rugged mountain scenery and across the water you can see Crib y Ddysgl, Snowdon, Lliwedd and the peaks of Grib Goch.

*Sam Loughran*





### Maerl - Sandside Beach, Graemsay, Orkney

Look closely at the irregular-shaped white objects washed up on this beach; they are not pebbles or broken shells, nor even pieces of coral, which they most resemble, but fragmented maerl, a slow growing “seaweed”, encased in accumulations of calcium carbonate. Beds of living and dead maerl occur in areas where currents are strong but sheltered from pounding waves and provide an important, if fragile, environment for small marine plants and animals. Maerl has been used by humans past and present in agriculture and, more recently, for marine water filtration but how sustainable the maerl beds will prove to be in the face of climate change and our own dredging or fishing practices, is a matter of great concern.

*Sandy Wotton*





## On The Edge

"Sometimes you only have a fleeting moment in time to grasp an opportunity, as fate may never again line up a set of circumstances in the same way again." – C.E. Graham.

The juxtaposition of the soft green Spring leaves against the hard slate caught my eye and was aided by the brief bit of light catching the foliage and cliff edge.

*Sarah Bindon*







### Curbar Edge, the Peak District

Curbar Edge after 1.5 hours of the best the weather can throw at a photographer around dawn. It gave me the reds, oranges and pastel pinks of the sunrise and the shifting mists rising and falling, alternately revealing or hiding glimpses of the valley below. Then came the rainbow. What more can you ask for?

*Sheila Curzon*





## Last Hurrah at Winkworth Arboretum

I caught the last of the autumn colour, late November 2017, just before strong winds were forecast. Taken at the National Trust's hillside arboretum near Godalming, Surrey.

*Shirley Graber*





## Fallen

This was shot in Teesdale. There are several fallen trees in the woodland that have been left to decay back into the woods. I was drawn to the intimation of time from the fallen trees and the relationship with the ones left standing.

*Simon Gulliver*





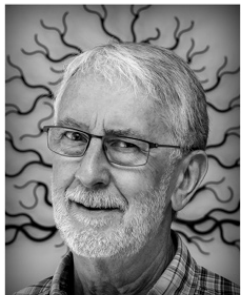
## The Sea, West Cork

This was taken on a small, secluded beach on the coast of West Cork, not far from Clonakilty. The almost straight edge and colours and patterns of the rock in the foreground caught my attention during a brief spell of brighter weather during a respite from the more typical heavy rain of the previous two days.

*Simon Hauxwell*







## One Oak and Twelve Poplars

The soft grey cloud was a gift for the tree silhouettes. Taken whilst hiking on The Cotswold Way to the north east of Cheltenham.

*Steve Gledhill*





## Svalbard, the long walk

Late winter on the seven islands, Svalbard.

*Stephen Hutchins*







### Green Lane, Peak District

This photograph was taken early in 2018 at Pindale near Castleton in Derbyshire. It is one of a series of Green Lane pictures that I have made for the Friends of the Peak District to highlight the damage caused by vehicle users to our precious protected landscape. Pindale is a unique Site of Special Scientific Interest and an ancient lead-mine.

*Stephen Walker*







### Late Winter Snow, Shacklow Woo

Travelling to a meeting near Buxton early this May I came across this almost monochromatic scene. Although late to the meeting, I'm glad I took the time to stop as the snow had completely melted later that day when I returned home. Seize the opportunities as they present themselves to you! (...and have a camera with you always!)

*Steve Giles*





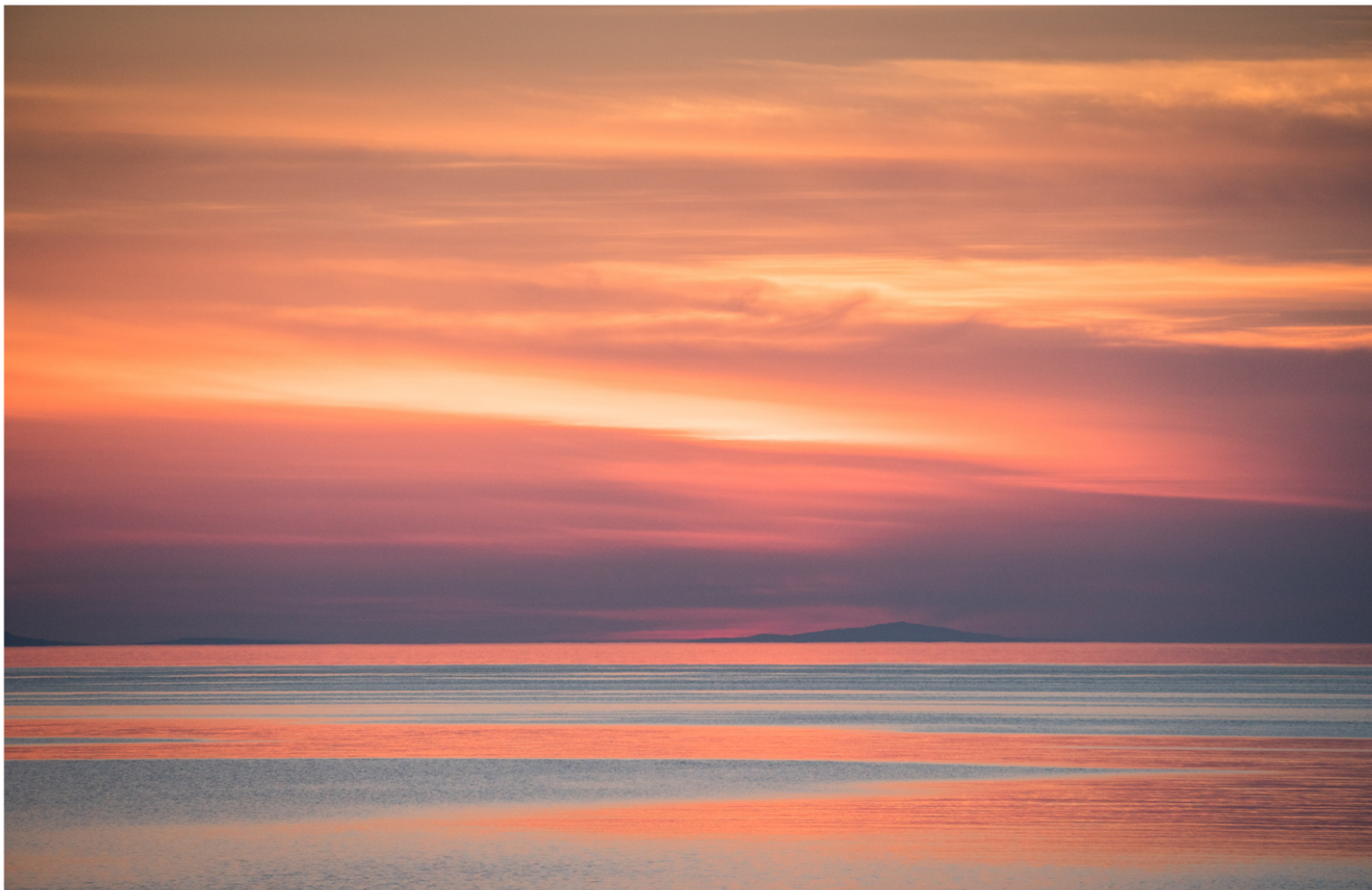
## Wistmans Wood

Travelling home after a short stay at Slapton Ley, we took a detour to Wistmans Wood in Dartmoor. Its rocky, mossy landscape in the dappled light that came streaming through the branches made it look quite mystical. This was an attempt to capture some of that feeling.

*Steve Russell*







## Towards Sunset off Milovaig

The view from Milovaig Harbour, Isle of Skye, looking across the Minches to North Uist. Taken with a Sony A6300. Whilst my usual horizon re-alignment and small adjustments to exposure and contrast were carried out, no changes were made to saturation.

*Steve Williams*





### Autumn in Oxhay Woods

This autumnal scene was captured at Oxhay Woods in the Derbyshire Peak District towards the end of what had been a somewhat disappointing sunrise shoot. With little to show from the early morning, it was good to find a pleasing composition which included some classic elements of this part of Derbyshire, including some long-abandoned millstones. It is an image blended from three exposures to capture the full dynamic range of the scene.

*Stewart Gregory*



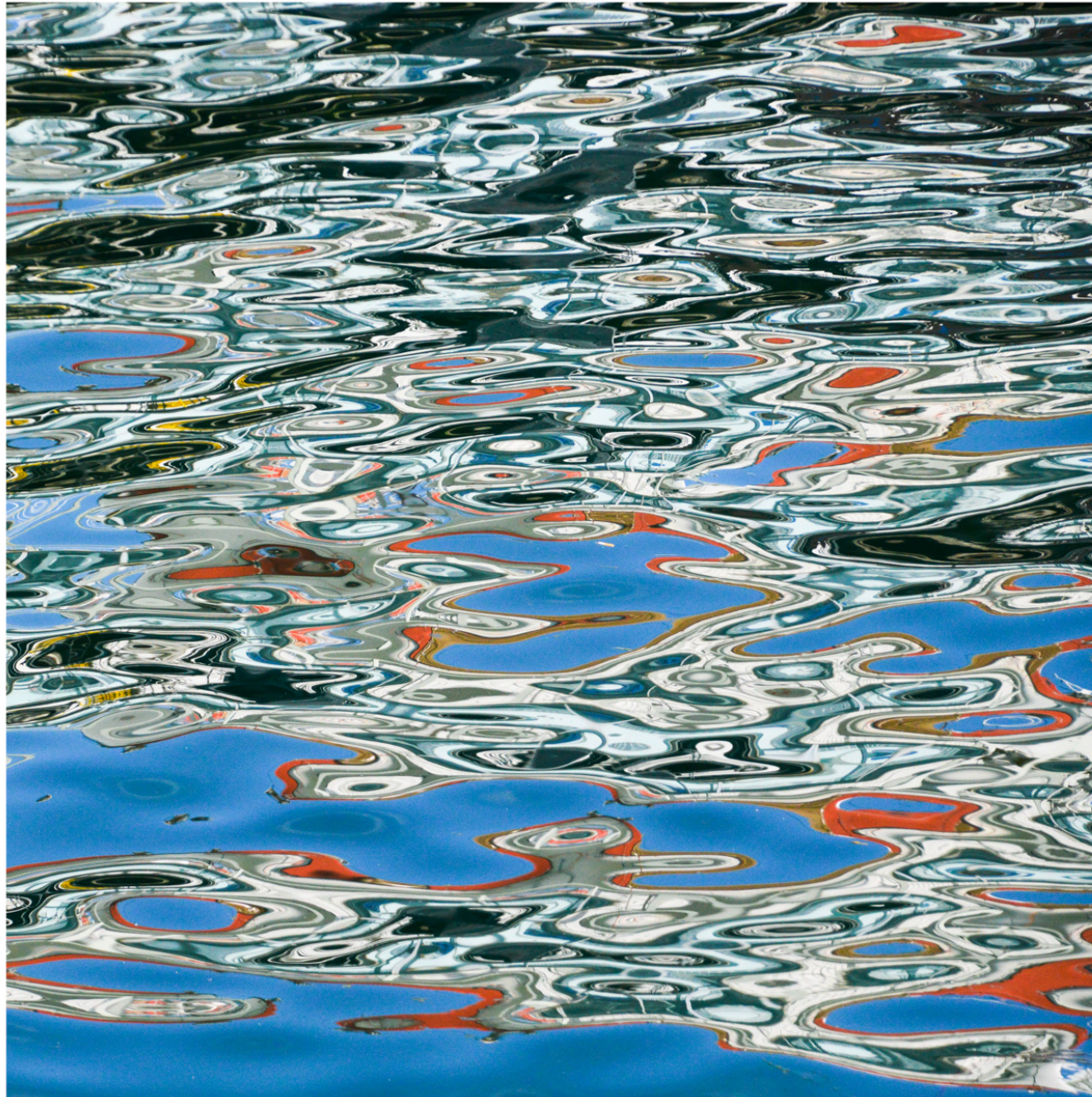


## Saltburn Stroll

I love going to Saltburn by the Sea. I'm disabled and so the pier is easily accessible by wheelchair. This image was shot in February, late afternoon. I was hoping for a wonderful sunset but nothing transpired so, I just sat and enjoyed watching people stroll along the beach as twilight descended.

*Susan Rowe*





### Mixed Emulsions

The harbour in Stromness, Orkney, is a busy working port accommodating fishing boats, ferries and the life-boat. The colourful craft are reflected in the calmed waters within the harbour walls and present hours of fun with ever-changing patterns. This version is one of the most colourful that I have captured, from May 2018, and I love the 'pop art' effect created by the gentle ebb and flow of the reflective surface. An alternative title might be 'Shaped by the Sea' but I plumped for one that alludes to the painterly result.

*Susan Shackleton*





## Light on the Moor

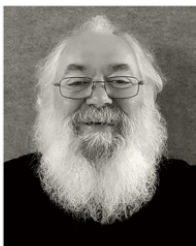
"Light on the Moor" was taken on Rannoch Moor last October following a period of very heavy rain, which we expect in Scotland!

This picture was taken on my Nikon D700 converted infrared camera.

We were parked when the sun appeared for just a few minutes. Enough time to set up the tripod and get one or two very pleasing shots.

*Ted French*





### The Lonely Traveller

Taken during a particularly wet and windy visit to Vesturhorn, Iceland, this long exposure landscape shot of the familiar mountains wouldn't have been anything out of the ordinary except for the lonely photographer pictured in the middle distance, who managed to keep completely still for the two minutes that it took to expose my image.

*Tim Nicholson*





## Summer Fall , Melincwrt, Neath Valley, Wales

The Waterfall Country of South Wales is defined by the geological structure and history of the valleys.

In winter, this fall is dominated by the sheer volume of cascading water while summertime exposes the massiveness of the rock face and the jumble of fallen detritus, sprinkled by the diminished flow. This contrast challenges me to represent the seasonal dimension and calmness of the location.

*Timothy Fearnside*







## Untitled

I was first attracted by the roots of the aged and fallen tree, exploding upwards like a dashing wave. The flow of the grain built on this feeling and was ultimately complimented and completed by foam-spray clouds.

I debated long and hard whether to include or exclude the left hand top return, but on balance I think it provides some tension and conversation with the central 'eruption'.

*Tony Martin*







## Dreamscape

Andre Gallant inspired this picture when he came to the UK with Freeman Patterson. Quite by accident Andre had dropped one colour slide on top of another and found it produced a very pleasing image.

I was intrigued by this and thought it would be good to try and see if I could produce a "Dreamscape" for myself. This is the only one I have been able to produce which has been a success; unfortunately I haven't yet been able to create another. This picture has a small amount of soft focus blended on the top layer before flattening the image.

*Trish French*





## View At Dinner

I have a growing fascination into connections between painting and photography, which I'm continually exploring through my art. In 2017 during a holiday in West Sussex, I paid a visit to Petworth House, with a view to finding out more about the work of inspirational artist J.M.W. Turner.

Set within a beautiful landscape, I was particularly drawn to the Carved Room or Long Dining Room of the house and the story that relates to Turner and four of his paintings which hang there.

I decided to photograph one of Turner's paintings and then go to the window and capture the view as I saw it, bringing together the past and present for a moment in time through my double exposure.

*Valerie Dalling*





## Duality, Sutton Park, Birmingham

There is little better for a landscape photographer than the promise of frost and mist on a winter's morning. Thankfully on this particular occasion I was lucky enough to have both, and I drove towards Sutton Park on the outskirts of Birmingham. Upon arrival, the dawn was just breaking and I was drawn to this set of silver birch, existing in symbiosis with each other, framed by the mist behind and the hoar frost on the ground.

*Verity Milligan*







Saltmarsh, Suffolk

*Veronica Worrall*





## Snow Queen

Quote from the story, related to the picture: There was never any form of gaiety here, not even a little bear-ball where the gale could blow and the polar bears walk on their hind legs and put on airs and graces; never a small card party with slaps and blows to the mouth; never the slightest signs of a coffee party of the young white-fox ladies – everything was empty, large and cold in the halls of the Snow Queen.

Picture was taken at Stirin Castle in Czech Republic, ICM technique

*Vladimir Kysela*





## Beach Art

Beautiful structures on the beach of Isle of Harris. An endless source of inspiration for the landscape photographer.

*Walter Spoor*

